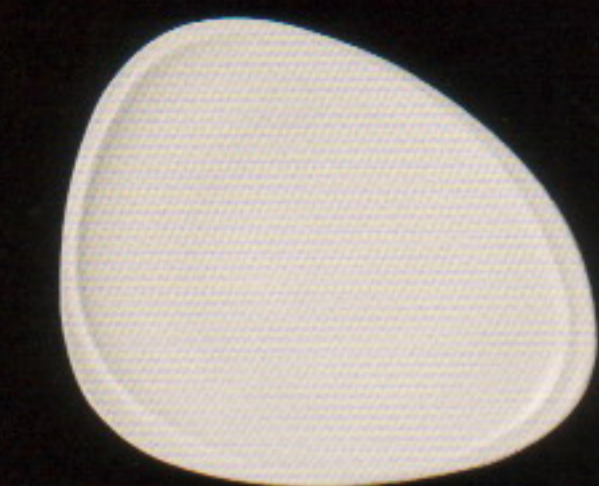


# Form : Mood

## Items and Description

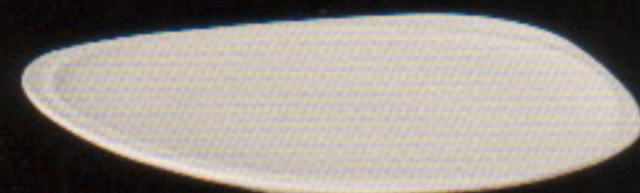
Size could be varied  $\pm$  2 percent

Capacity could be varied  $\pm$  10 percent



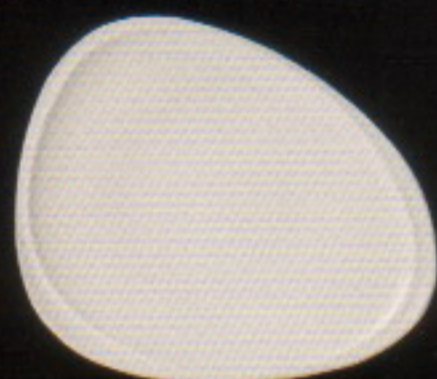
### FLAT PLATTER

P 5605 30.0 X 35.0 cm.  
(11 " X 13 <sup>3</sup>/<sub>4</sub> ") 1,230 g.



### HOTEL FLAT PLATTER

P 5638 25.0 X 30.0 cm.  
(9 <sup>7</sup>/<sub>8</sub> " X 11 <sup>7</sup>/<sub>8</sub> ") 923 g.  
P 5639 20.0 X 23.5 cm.  
(7 <sup>7</sup>/<sub>8</sub> " X 9 <sup>3</sup>/<sub>8</sub> ") 515 g.  
P 5640 16.0 X 17.5 cm.  
(6 <sup>1</sup>/<sub>4</sub> " X 6 <sup>7</sup>/<sub>8</sub> ") 255 g.



### FLAT PLATE

P 5601 26.0 X 30.5 cm.  
(10 <sup>1</sup>/<sub>4</sub> " X 12 ") 820 g.  
P 5602 19.5 X 23.5 cm.  
(7 <sup>5</sup>/<sub>8</sub> " X 9 <sup>1</sup>/<sub>4</sub> ") 430 g.  
P 5603 16.0 X 17.0 cm.  
(6 <sup>1</sup>/<sub>4</sub> " X 6 <sup>3</sup>/<sub>4</sub> ") 233 g.



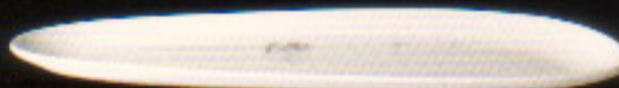
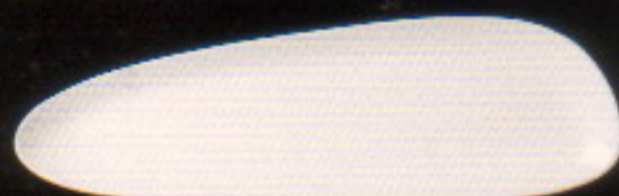
### SNACK PLATE

P 5606 15.0 X 25.5 cm.  
(5 <sup>3</sup>/<sub>4</sub> " X 10 <sup>1</sup>/<sub>8</sub> ") 335 g.



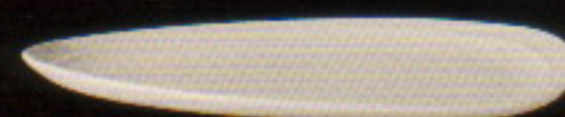
### LONG TRAY

P 5630 13.0 X 41.0 cm.  
(5 <sup>1</sup>/<sub>8</sub> " X 16 <sup>1</sup>/<sub>8</sub> ") 527 g.



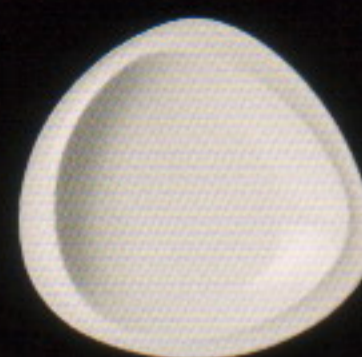
### OVAL PLATE (L)

P 5607 23.5 X 41.0 cm.  
(9 <sup>1</sup>/<sub>4</sub> " X 16 <sup>1</sup>/<sub>8</sub> ") 1,110 g.



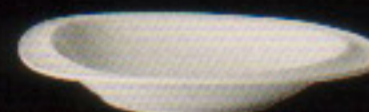
### OVAL PLATE (M)

P 5608 18.0 X 32.5 cm.  
(7 <sup>1</sup>/<sub>8</sub> " X 12 <sup>3</sup>/<sub>4</sub> ") 583 g.



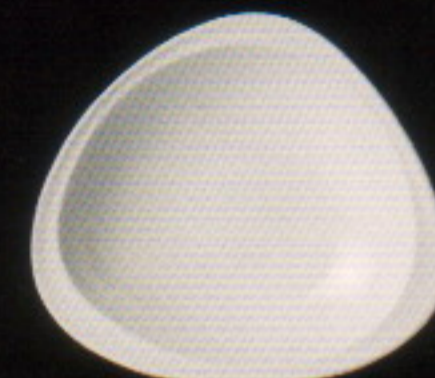
### SOUP PLATE

P 5604 20.5 X 22.0 cm.  
(8 <sup>1</sup>/<sub>8</sub> " X 8 <sup>5</sup>/<sub>8</sub> ") 430 g.



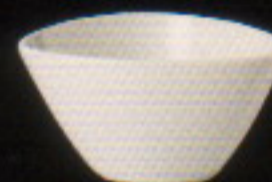
### PASTA BOWL

P 5621 26.5 X 26.5 cm.  
(10 " X 10 <sup>8</sup>/<sub>8</sub> ") 732 g.



### SALAD BOWL

P 5635 25.0 X 25.0 cm.  
(9 <sup>7</sup>/<sub>8</sub> " X 9 <sup>7</sup>/<sub>8</sub> ") 920 g.  
P 5636 21.0 X 21.0 cm.  
(8 <sup>1</sup>/<sub>4</sub> " X 8 <sup>1</sup>/<sub>4</sub> ") 620 g.



### RICE BOWL

P 5627 11.0 X 11.5 cm.  
(4 <sup>3</sup>/<sub>8</sub> " X 4 <sup>5</sup>/<sub>8</sub> ") 180 g.



### BOWL

P 5642 17.5 X 17.5 cm.  
(6 <sup>7</sup>/<sub>8</sub> " X 6 <sup>7</sup>/<sub>8</sub> ") 390 g.



### SOUP TUREEN WITH LID

P 5620/L 3.00 lte.(10.5 oz.) 2,030 g.

